

Customer :

customer

Customer part :

customer part

Comment :

Comment

S1=4.27

S2=5.56

Tmax=462

Tp S2=501.0

PI=0.43

HI=105

Sample =1717.30

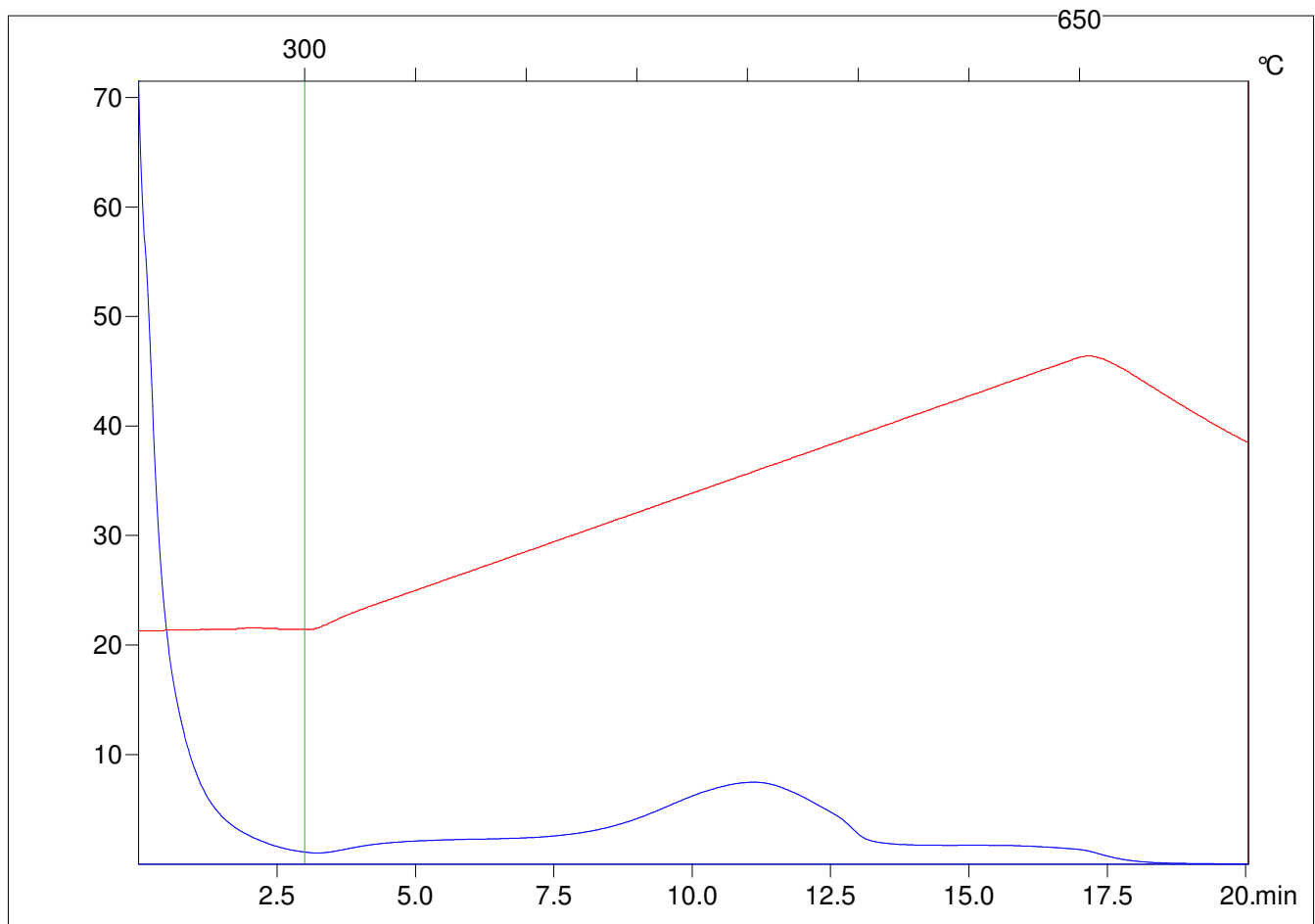
Method =Bulk Rock

Cycle=Basic

KFID(10\*9)=1444

Qty =70.7

TOC=5.29



C:\VINC\PK2\_1792\PK020.R00 : FID pyrolysis graphic

State

Pyro Status

Oxi Status